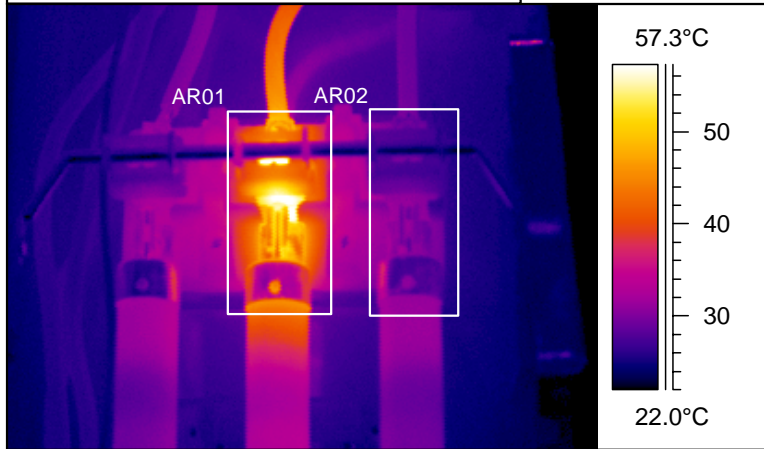


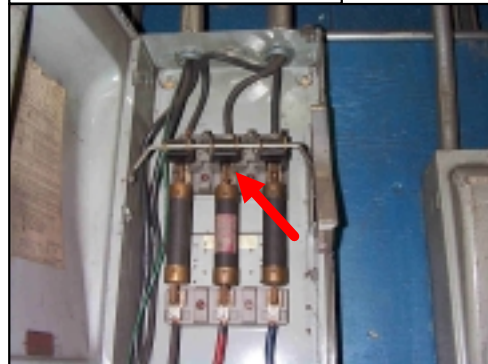
<b>DESCRIPTION</b>	<b>DATE</b>
<b>Disconnect Switch</b>	<b>Feb. 4/ 05</b>

**Identification:** C & S Panel : 73 Disconnect Switch

**INFRARED IMAGE**



**PHOTO**



Object parameter	Value
Ambient temperature	23.0°C
Label	Value
AR01 : max	64.5°C
AR02 : max	37.3°C

Current Measured at Time of Inspection
31 A, 33 A, 30 A

**INFORMATION:**

Infrared image of the "C & S panel: 73" disconnect switch.  
 Located in the stock room electrical area.  
 Heating noted at the middle switch hinge and contact blade area (arrow in photo).  
 See IR information chart above for maximum temperature inside area box.  
*Note: AR02 is provided for temperature comparison only.*  
**Recommendation:** Replace this switch.

**CONDITION PRIORITY:** High **Medium** Low

**SUSPECT:** Loose/ dirty switch blade contacts