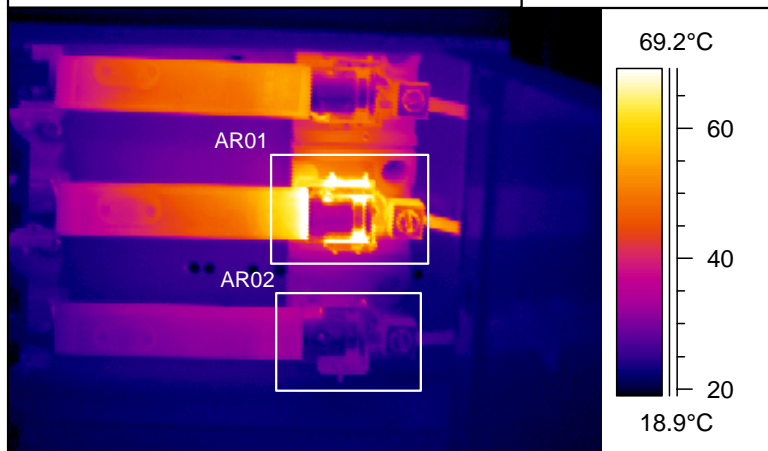


DESCRIPTION	DATE
Disconnect Switch	Oct. 9, 2004

Identification: Main transfer belt disconnect switch

INFRARED IMAGE



PHOTO



IR information	Value
Date of creation	09/10/2002
Object parameter	Value
Ambient temperature	23.0°C
Label	Value
AR01 : max	77.7°C
AR02 : max	43.5°C

Current Measured at Time of Inspection

17 A, 17 A, 18 A

INFORMATION:

Infrared image of the "main transfer belt" disconnect switch.

Located in the west electrical room in the Federal Pioneer distribution panel #2B.

Heating noted at the right-middle (load-side) fuse clip connection (arrow in photo).

See IR information chart above for maximum temperature inside area box.

Note: AR02 is provided for temperature comparison only.

Recommendation: Replace all of the heating fuse clip connection components. Replace fuses. Clean connections. Tighten all connection to manufacturer's specifications.

CONDITION PRIORITY:

High

Medium

Low

SUSPECT: Loose/ dirty fuse clip connection