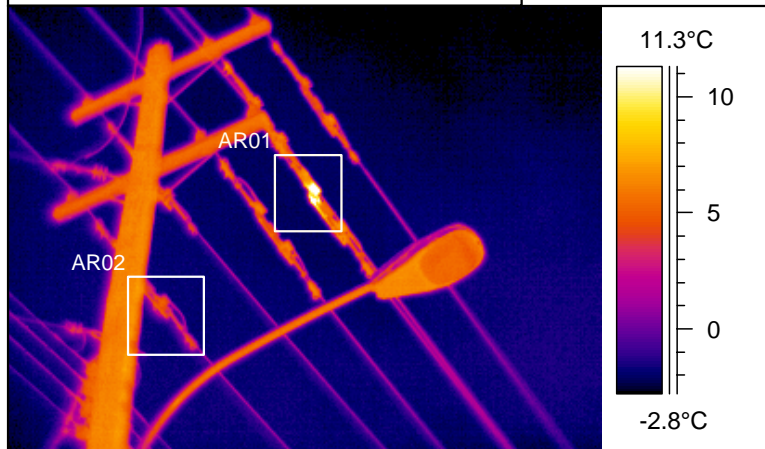


| DESCRIPTION | DATE |
|---------------|------------|
| Line Switches | 26/03/2003 |

Identification: Pole ID # 28, 217 Reed Street

INFRARED IMAGE



PHOTO



| IR information | Value |
|---------------------|------------|
| Date of creation | 26/03/2003 |
| Object parameter | Value |
| Ambient temperature | 5.0°C |
| Label | Value |
| AR01 : max | 15.8°C |
| AR02 : max | 7.3°C |

Temperature Rise: 8.54 °C

INFORMATION:

Infrared image of in-line switches.
 Located at pole ID # 28, 217 Reed street in sample city.
 Heating noted at the bottom contacts of switch ILS45, red phase, road side.
 At arrow in photo.
 See IR information chart above for maximum temperature inside area box (AR01).
 AR02 is provided for comparison only.

CONDITION PRIORITY: Urgent **Intermediate** Minor

SUSPECT: Heating switch connection.